



BD SWISS+

MT4 Guide

Desktop

June 2021

Index

Page

• How To Download the MT4 / MT5 (Video)	04
• Login	05
• Login Issues	06
• Market Watch	09
• Grey Assets	10
• Specifications	12
• Chart	13
• Chart Toolbar	14
• Candlesticks Explained	15
• Customize Colors	17
• Ask Line	18
• Navigator	19
• Terminal	20
• How To Place a Trade on the MT4 (Video)	21
• New Order	22
• Pending Order	23
• Modify Order	24
• Invalid S/L or T/P	25

Index

Page

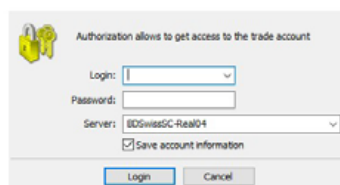
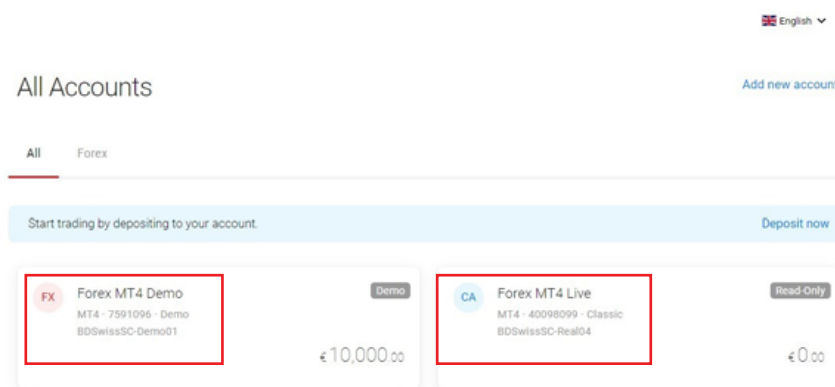
• S/L and T/P Lines	26
• Trailing Stop	28
• Partial Close	29
• Close Order	30
• Profit	31
• Account History	32
• Alerts	33
• Drawing Tools	35
• Technical Indicators (Add on the chart)	36
• Technical Indicators (Download)	37
• Technical Indicators (Delete)	37
• Profiles	38
• Templates	39
• Expert Advisor (EA)	40
• Strategy Tester	42
• Shortcuts	43

How to Download the MT4/MT5 Video



Login

1. Find your **MT4 Login details** on the BDSwiss Dashboard when you log into your Trading account on the website
2. Open your MT4, fill in your **MT4 account ID** and select the **Server** of the desired account
3. The Password is the same used to register the Trading account

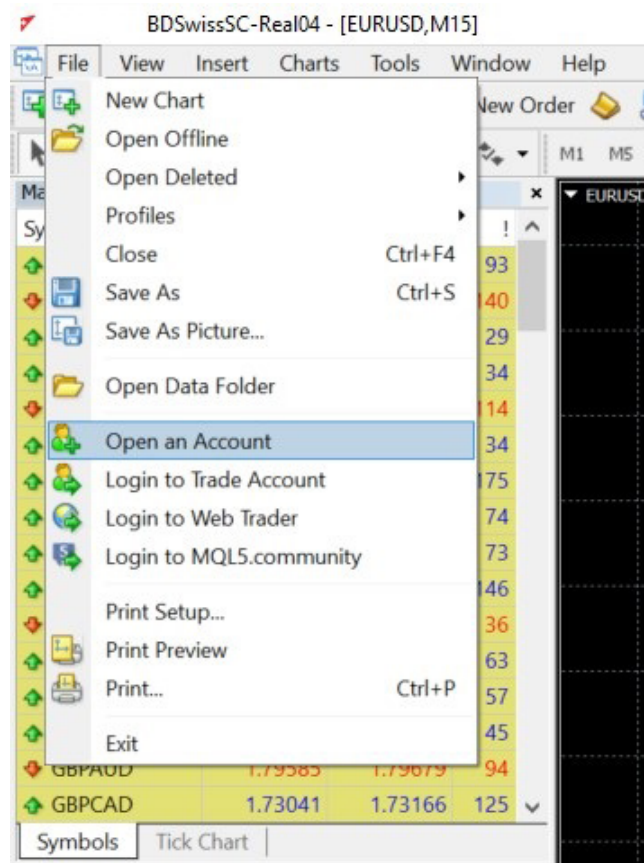


MT4 login example (Screenshot)

Login Issues

If you have issues logging into the MT4 desktop platform, after confirming that all login details are correct (Account ID + Server + same password used in BDSwiss account), and that you have **downloaded the MT4 platform from our website**, please follow the below instructions:

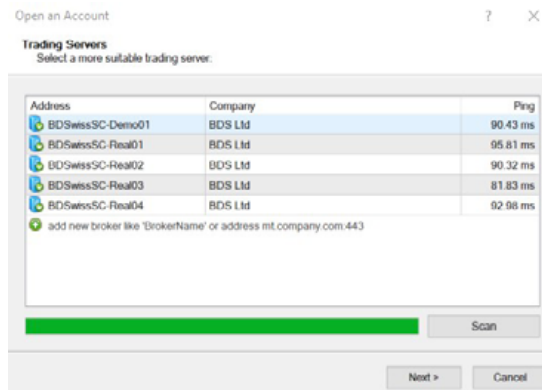
- 'File' > 'Open an Account'



Login Issues

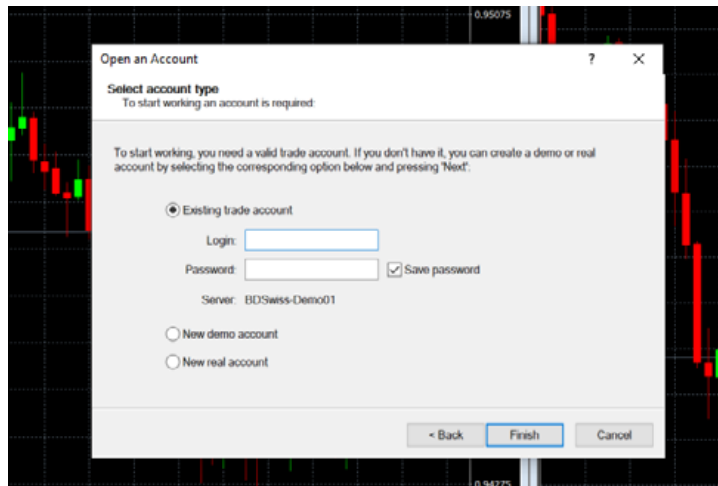
- A pop up window will open where you need to click 'Scan'
- Once the green bar is full, you need to select the correct Server address and click 'Next'

FSA:



Login Issues

- Once the correct server has been selected, choose login into an 'Existing trade account', fill in the details and click Finish



Open an Account

Select account type
To start working an account is required:

To start working, you need a valid trade account. If you don't have it, you can create a demo or real account by selecting the corresponding option below and pressing Next:

Existing trade account

Login:

Password: Save password

Server: BDSwiss-Demo01

New demo account


New real account

< Back Finish Cancel

Note: Password reset only needs to be done if you are still unable to login after these steps

Market Watch

The top left window is called the **Market Watch**, where you'll find a list of assets available to trade on the MT4 platform and the **Bid** and **Ask** prices.

- You can open or close it by pressing the hotkeys 'Ctrl + M' or from the menu click 'View' > 'Market Watch' or by clicking the button  on the standard toolbar.



- You can choose from *Forex, Commodities, Indices, Equities* and *Cryptocurrencies* and you can search through the symbols by the first letter with the keyboard.
- The *Market Watch* gives you the ability to observe price changes on instruments in real-time.
- Right-click on the *Symbol* > 'Chart window' or drag the Symbol with the mouse to the chart window to see the graphical representation of the price movement.

Market Watch: 09:39:48			
Symbol	Bid	Ask	!
▲ AUDCAD	0.94303	0.94347	44
▼ AUDCHF	0.64987	0.65011	24
▼ AUDJPY	74.056	74.075	19
▲ AUDUSD	0.70330	0.70347	17
▼ CADCHF	0.68900	0.68916	16
▼ CADJPY	78.511	78.531	20
▼ CHFJPY	113.934	113.969	35
▼ EURAUD	1.65616	1.65651	35
▼ EURCAD	1.56222	1.56243	21
▼ EURCHF	1.07648	1.07667	19
▼ EURGBP	0.91772	0.91789	17
▼ EURJPY	122.670	122.688	18
▼ EURNZD	1.78575	1.78602	27
▲ EURUSD	1.16494	1.16509	15
▼ GBPAUD	1.80451	1.80480	29
▲ GBPCAD	1.70214	1.70235	21
▼ GBPCHF	1.17286	1.17306	20
▲ GBPJPY	133.653	133.672	19
▼ GBPNZD	1.94566	1.94594	28
▼ GBPUSD	1.26925	1.26943	18
▲ NZDCAD	0.87474	0.87493	19
▲ NZDCHF	0.60273	0.60290	17

Grey Assets

If you are unable to trade on the MT4 desktop platform because the assets are grayed out:

Symbol	Bid	Ask	!	^
🔻 AUDCAD	0.94823	0.94868	45	
🔻 AUDCHF	0.65487	0.65510	23	
🔻 AUDJPY	74.747	74.765	18	
🔼 AUDUSD	0.71050	0.71066	16	
🔻 CADCHF	0.69048	0.69065	17	
🔻 CADJPY	78.808	78.828	20	
🔻 CHFJPY	114.118	114.154	36	
🔼 EURAUD	1.64451	1.64485	34	
🔼 EURCAD	1.55978	1.56000	22	
🔻 EURCHF	1.07713	1.07731	18	
🔼 EURGBP	0.91683	0.91697	14	
🔼 EURJPY	122.941	122.958	17	
🔼 EURNZD	1.77536	1.77565	29	
🔻 EURUSD	1.16856	1.16873	17	
🔼 GBPAUD	1.79357	1.79382	25	
🔼 GBPCAD	1.70115	1.70136	21	

More Info: <https://blog.bdswiss.com/en/trading-on-the-mt4-after-the-latest-esma-changes-heres-what-you-need-to-know/>

VIP and **RAW** account holders have to trade with the assets ending with **.b.** and **.r.** respectively

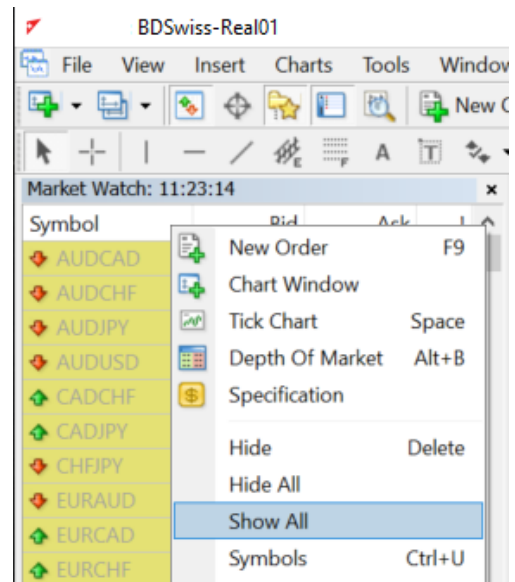
🇺🇸 EURUSD.b.

🇺🇸 EURUSD.r.

Grey Assets

You simply need to follow the below steps to get the right symbols to trade:

1. Right-click anywhere inside the Market Watch window and click on 'Show All'



Once you have done this, you will be able to scroll down in the *Market Watch* window and see the new symbols that can now be traded:

Market Watch: 12:29:27			
Symbol	Bid	Ask	!
➡ AUDCAD.b.	0.95869	0.95906	37
➡ AUDCHF.b.	0.66072	0.66087	15
➡ AUDNZD.b.	1.08696	1.08716	20
➡ AUDUSD.b.	0.72744	0.72758	14
➡ EURAUD.b.	1.62971	1.62991	20
➡ EURCAD.b.	1.56266	1.56287	21
➡ EURCHF.b.	1.07686	1.07702	16
➡ EURGBP.b.	0.92243	0.92260	17
➡ EURJPY.b.	125.698	125.710	12
➡ EURNZD.b.	1.77161	1.77180	19
➡ EURUSD.b.	1.18563	1.18574	11

Market Watch: 12:30:58			
Symbol	Bid	Ask	!
➡ AUDCAD.r.	0.95879	0.95900	21
➡ AUDCHF.r.	0.66074	0.66085	11
➡ AUDNZD.r.	1.08705	1.08715	10
➡ AUDUSD.r.	0.72749	0.72755	6
➡ EURAUD.r.	1.62958	1.62969	11
➡ EURCAD.r.	1.56261	1.56268	7
➡ EURCHF.r.	1.07680	1.07690	10
➡ EURGBP.r.	0.92268	0.92279	11
➡ EURJPY.r.	125.695	125.703	8
➡ EURNZD.r.	1.77146	1.77163	17
➡ EURUSD.r.	1.18554	1.18560	6

Specifications

In the MT4 platform, open the Market Watch window, right-click on the asset you want to check the details of and select 'Specification'.

This pop-up window allows to view the contract specifications. The main parameters are the following:

Spread – difference between Bid and Ask prices;

Digits – the amount of digits after decimal point in the price representation;

Stops level – minimum distance to the current price in points at which Stop Loss and Take Profit orders can be placed;

Contract size – one-lot price in deposit currency;

Minimal/Maximal volume - lowest and highest lot allowed per trade;

Swap type – rollover calculation type (in points or in percentage);

Swap long/short – rollover size for a long/short position;

3-days swap - information about the day of the triple rollover fees;

Sessions - trading schedule.

EURUSD contract specification

Spread	floating	
Digits	5	
Stops level	20	
Contract size	100000	
Margin currency	EUR	
Profit calculation mode	Forex	
Margin calculation mode	Forex	
Margin hedge	0.00	
Margin percentage	100.0%	
Trade	Full access	
Execution	Market	
GTC mode	Pendings are good till cancel	
Minimal volume	0.01	
Maximal volume	50.00	
Volume step	0.01	
Swap type	In points	
Swap long	-12	
Swap short	5	
3-days swap	Wednesday	
Sessions	Quotes	Trade
Sunday		
Monday	00:00-24:00	00:02-23:58
Tuesday	00:00-24:00	00:02-23:58
Wednesday	00:00-24:00	00:02-23:58
Thursday	00:00-24:00	00:02-23:58
Friday	00:00-24:00	00:02-23:58
Saturday		

Close

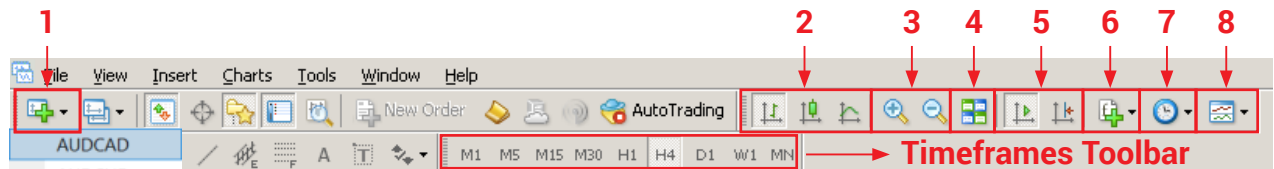
Chart

The top right window is called the **Chart** window.

The charts show the price movements of an asset over a specific time frame (hourly, daily, weekly etc).



Chart Toolbar



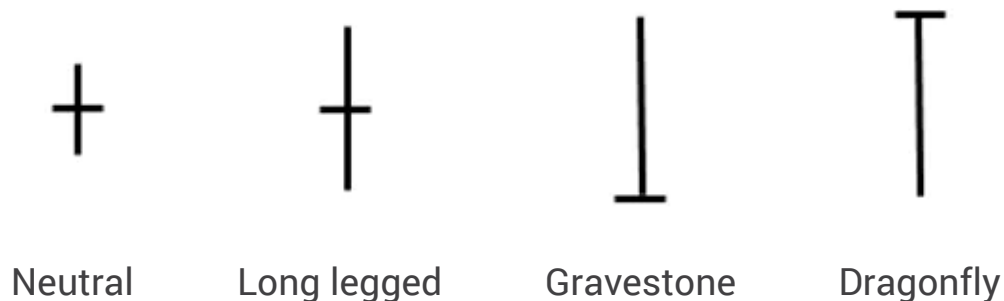
1. Open chart
2. Change the chart type - bar, candlesticks or line
3. Zoom in and out of the chart
4. Arrange windows as non-overlapping tiles
5. Lock the chart to auto scroll, put chart indent
6. Indicators List
7. Chart Periods (can also be changed on the timeframes toolbar)
8. Templates

Candlesticks Explained

There are three specific points that create a **Candlestick**: the **Open**, the **Close**, and the **Wicks**.

Candlesticks are comprised of a body which represents the difference between the Open and Close prices.

- **Up** candlesticks (Bullish) - occur when the close price is **higher** than the open
- **Down** candlesticks (Bearish) - occur when the close price is **lower** than the open
- If the open price is equal to the close price there will not be a body, just a line – this type of candle is referred to as a **'Doji'**:



The thinner lines extending beyond the body are called **'Wicks'** – above the body is the high and below the body is the low for the selected time period.

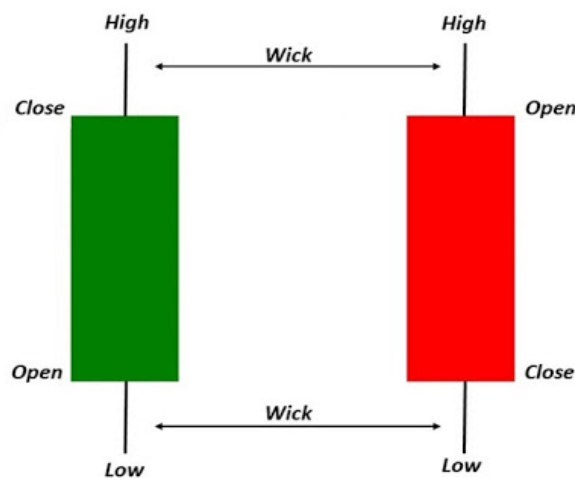
Candlesticks Explained

Open price - The open price depicts the first traded price during the formation of a new candle.

High price - The top of the upper wick. If there is no upper wick, then the high price is the open price of a bearish candle or the closing price of a bullish candle.

Low price - The bottom of the lower wick. If there is no lower wick, then the low price is the open price of a bullish candle or the closing price of a bearish candle.

Close price - The close price is the last price traded during the formation of the candle.



If you have the chart on a daily setting each candle represents one day, with the open price being the first price traded for the day and the close price being the last price traded for the day.

Customize Colors

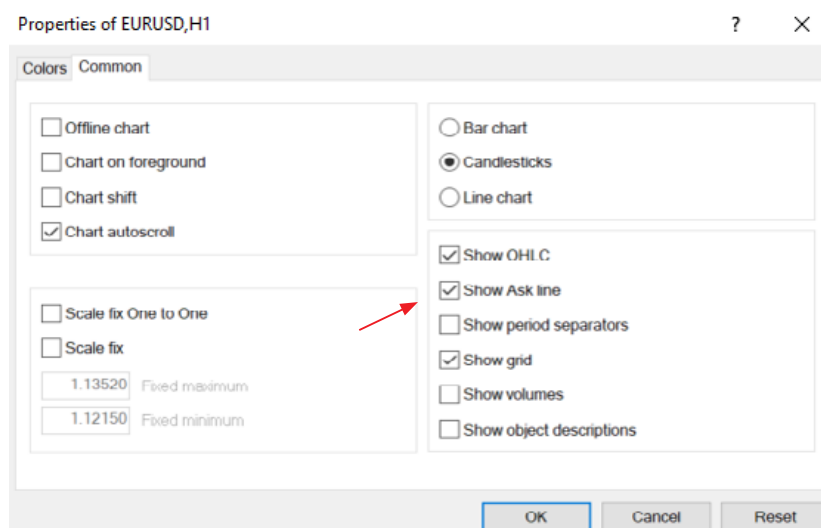
You are able to fully customize charts to your preferences by pressing **F8** or right-clicking on the chart window > **'Properties'** > **'Colors'**



Ask Line


The MT4 chart shows the BID (sell) line by default. The ASK price line is not visible on the Chart.

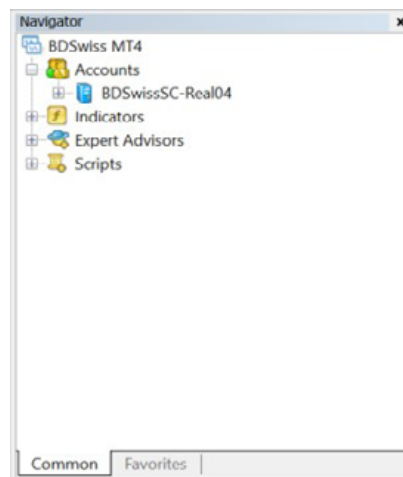
- To add the ASK line you need to press **F8** or right-click on the chart window on the MT4 > **'Properties'** > **'Common'** > **'Show Ask line'** > OK



Navigator


In the **Navigator** window you will be able to see, in tree from, the list of open Accounts (and be able to switch between them), Indicators, EAs and Scripts.

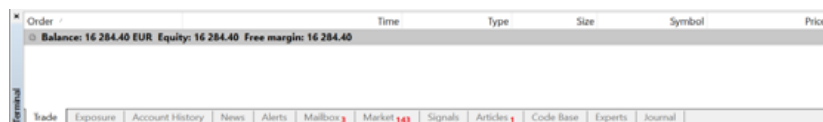
- You can open or close it by pressing the hotkeys '**Ctrl + N**' or from the menu click '**View**' > '**Navigator**' or by clicking the button  on the standard toolbar.



Terminal

The **Terminal** is where you manage and monitor your trading, open trades and pending orders, and check details such as your trading Account History, overall Balance and Equity, and Margin.

- You can open or close it by pressing the hotkeys '**Ctrl + T**' or from the menu click '**View**' > '**Terminal**' or by clicking the button  on the standard toolbar.



How To Place a Trade on the MT4

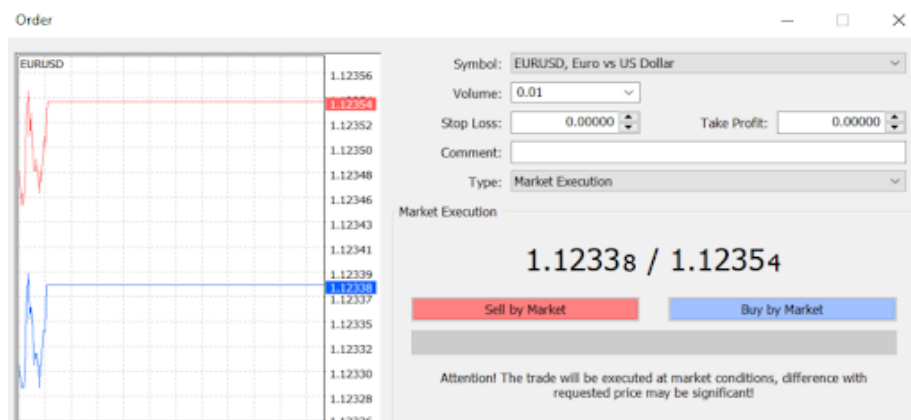


New Order

To open a position, at the **current market price - Market Execution**, click 'New order' on the desired asset or press the **F9** hotkey on the chart window and a new pop-up window will open. Here you can set the volume of the trade in lots, the Stop Loss and Take Profit, and then click on the Sell or Buy button (1.)

You can also enable the **One Click trading** on the chart by clicking 'Alt + T' where you simply select the volume of the trade and click on the SELL or BUY Button on the top left corner of the chart (2.)

1.



2.

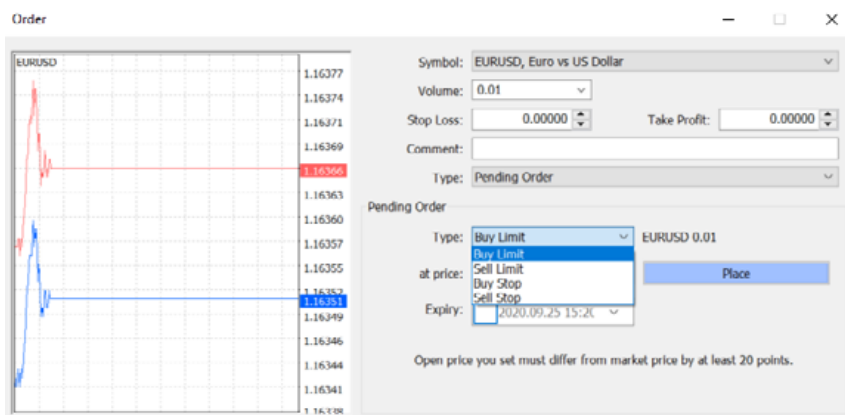


Pending Order

If you want to place an order, not for immediate execution, but for when a **certain price point has been hit** - Pending Order.

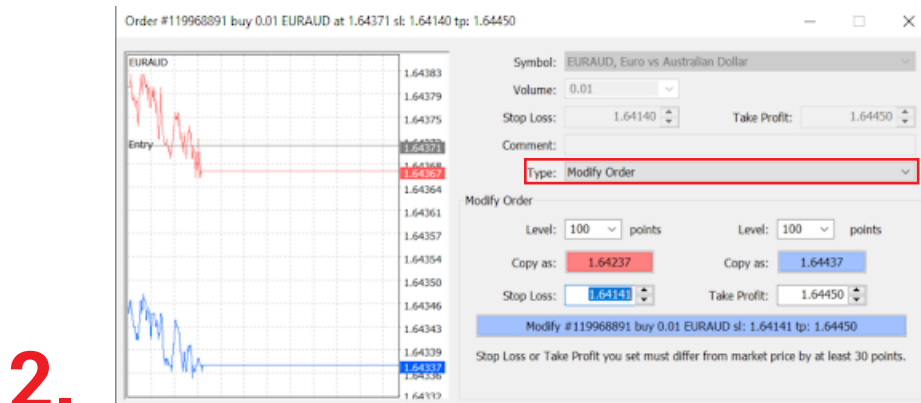
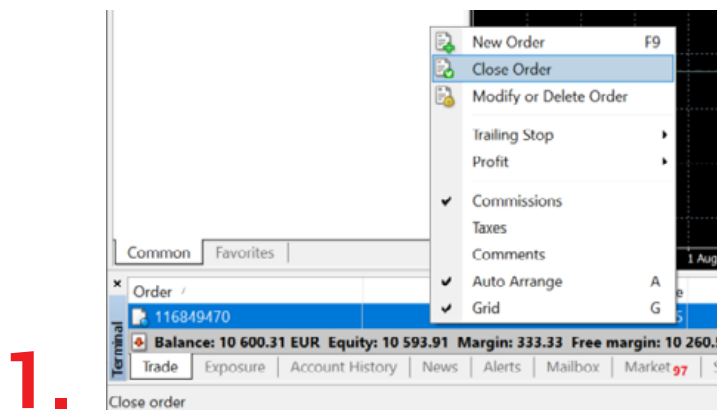
You will have 4 options:

- **Buy Limit** – If you plan on going long at a level lower than the market price
- **Sell Limit** – If you plan on going short at a level higher than the market price
- **Buy Stop** – If you plan on going long at a level higher than the market price
- **Sell Stop** – If you plan on going short at a level lower than the market price



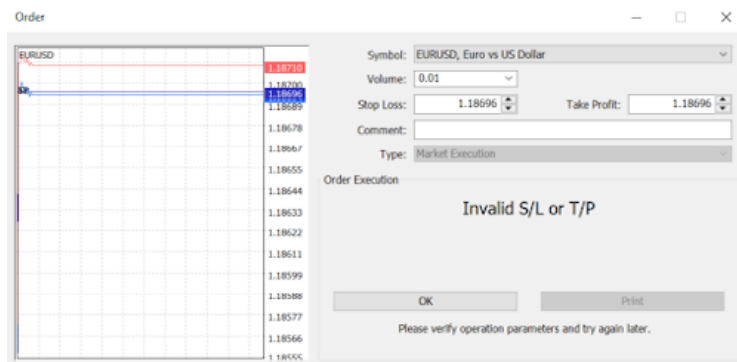
Modify Order

- Right-click on the desired order and then click 'Modify or Delete Order' (1.) - a pop-up window will open to allow the trade to be modified
- Or, double-click on the desired order and a the pop-up window will appear where you can **Modify Order** on the Type drop down list (2.)
- Click on the Blue Modify button to save the changes

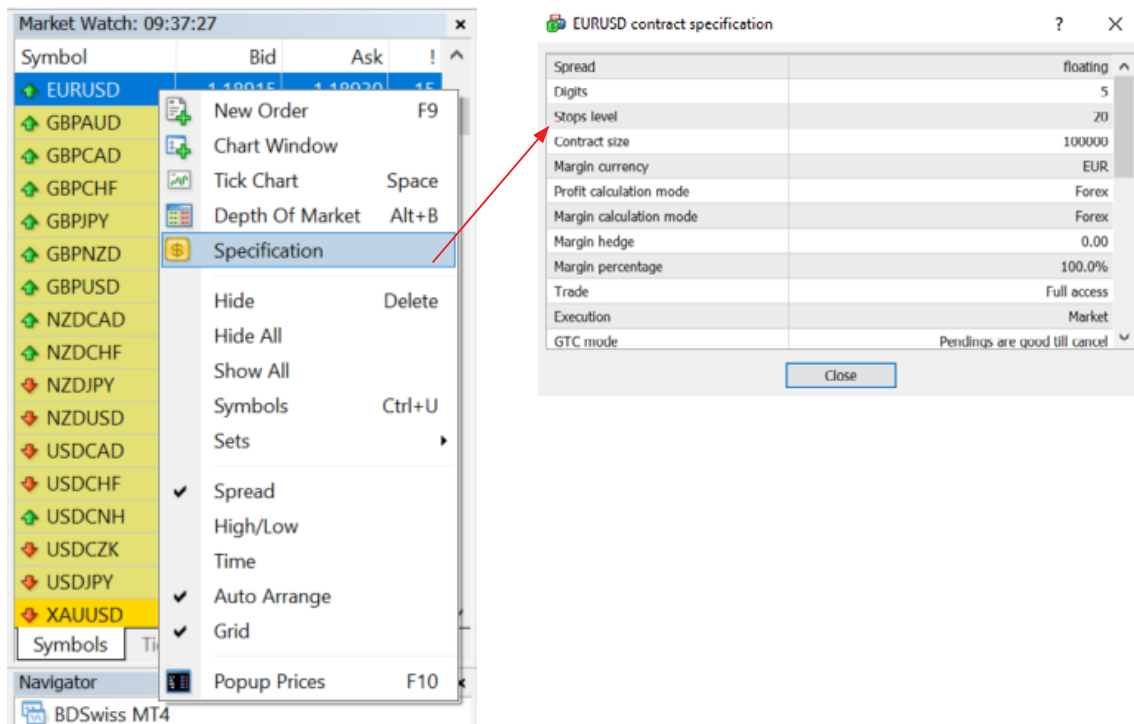


Invalid S/L or T/P

If you are unable to open a trade and you receive the error message Invalid S/L or T/P.



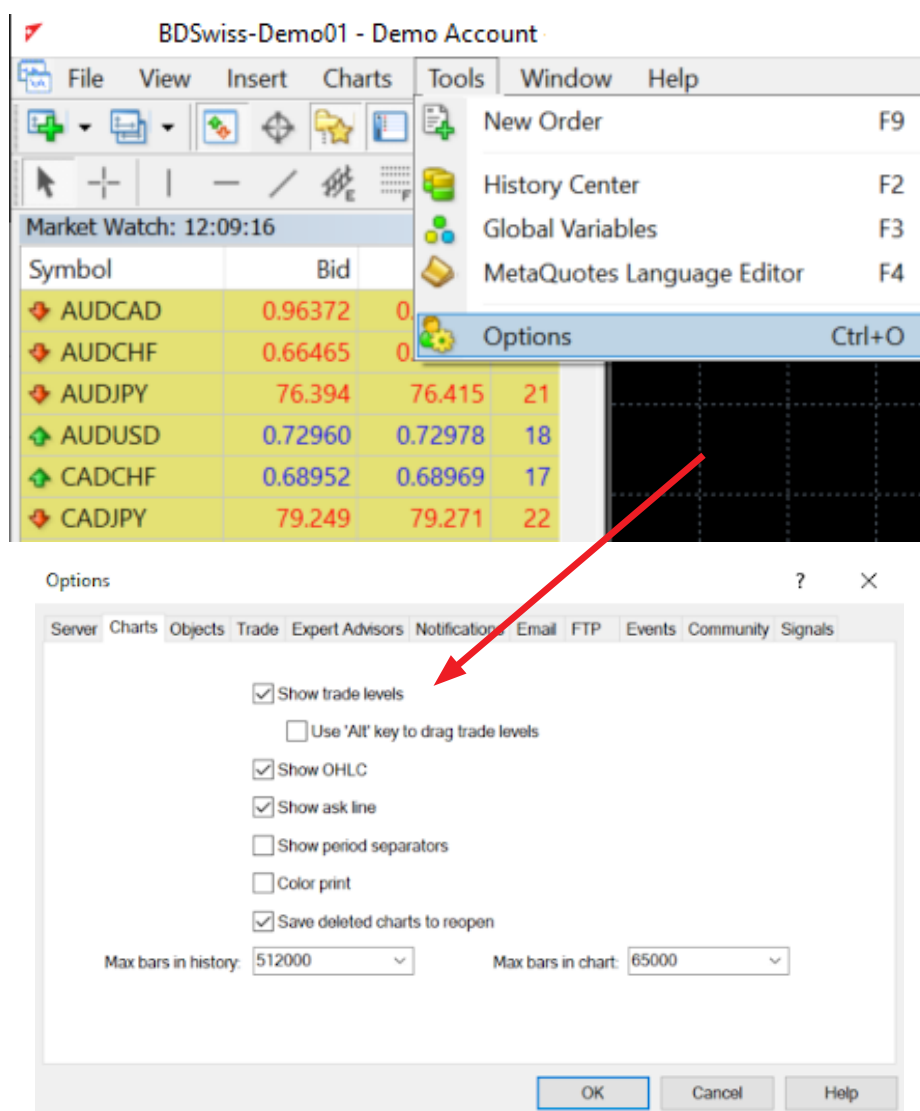
- Right-click on the asset on the **Market Watch** window > '**Specifications**' > '**Stops level**' and check the distance, from the actual price, that the S/L and T/P needs to be placed



S/L and T/P Lines

If you place a trade with S/L and T/P and you cannot see the selected levels line on the MT4:

1. Make sure that you have this option enabled by pressing **'Ctrl + O'** or going to **'Tools'** > **'Options'** > **'Charts'** > click **'Show Trade Levels'** > OK



* If selected, you will be able to change the S/L and T/P levels on the chart window by pressing **'Alt'** and dragging the lines

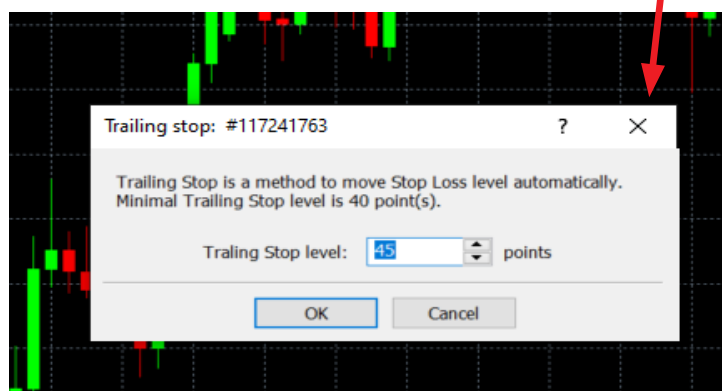
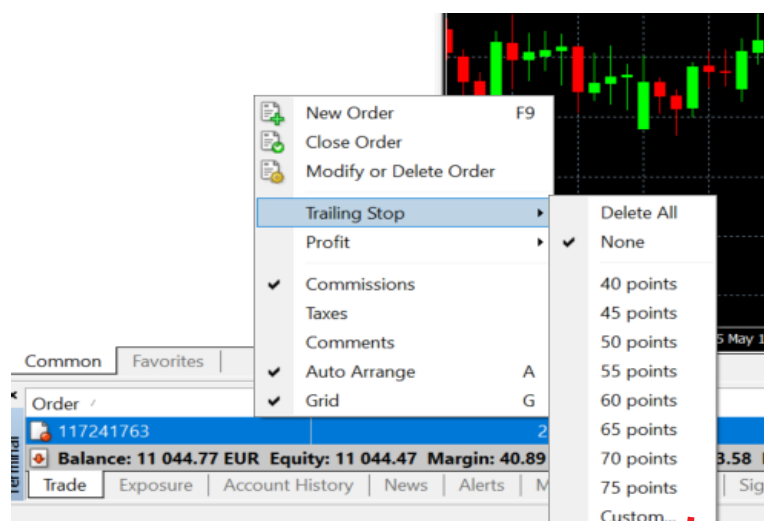
S/L and T/P Lines

You can also select the open trade on the 'Trade' tab on the 'Terminal' window > drag and drop the open trade on the chart



Trailing Stop

- Right-click on the desired order on the 'Terminal' > 'Trade' window and then click on the 'Trailing Stop' option
- A list of options will open, where you can select your desired distance between the TP level and the current price or customize it.
- The Trailing Stop works in the terminal, not in the server (like SL or TP) - **It will not work if the terminal is off**. In this case, only the Stop Loss level that has been set by the Trailing Stop will be triggered.
- Trailing Stop is processed once per tick. If multiple orders with Trailing Stop are open for one symbol, only the trailing stop of the latest open order is processed.



Partial Close

To **Partially Close an Order**, double-click on the order and a new pop-up window will appear where you can select the **Volume you wish to close** and then click on the yellow Close button.

Order #116852660 buy 0.10 EURUSD at 1.12654 sl: 0.00000 tp: 0.00000

EURUSD

Symbol: EURUSD, Euro vs US Dollar

Volume: 0.05

Stop Loss: 0.00000 Take Profit: 0.00000

Comment:

Type: Market Execution

Market Execution

1.12599
1.12596
1.12594
1.12593
1.12590
1.12587
1.12584
1.12581
1.12578
1.12576
1.12575
1.12572
1.12569
1.12566
1.12563
1.12560
1.12557

1.12576 / 1.12594

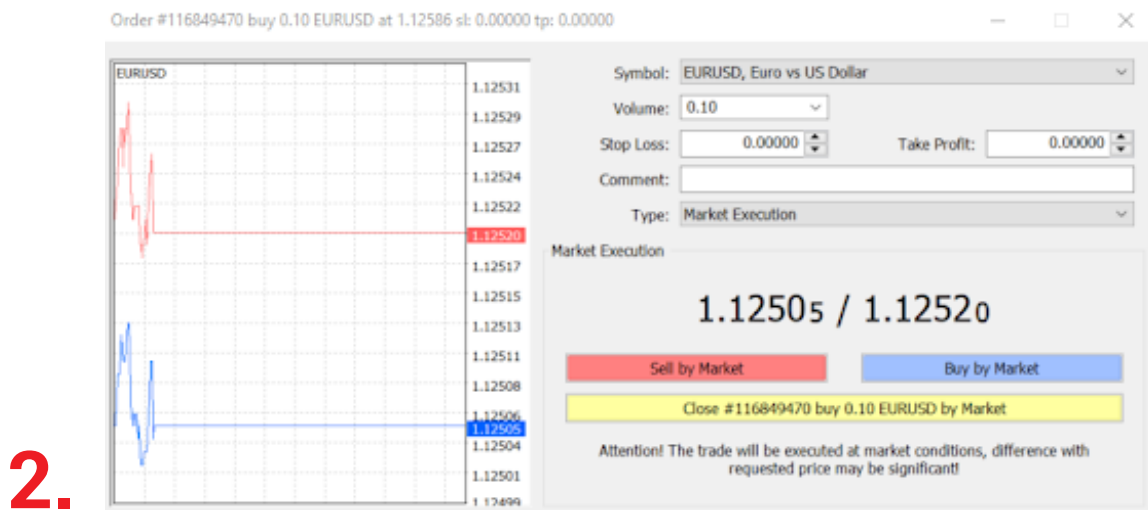
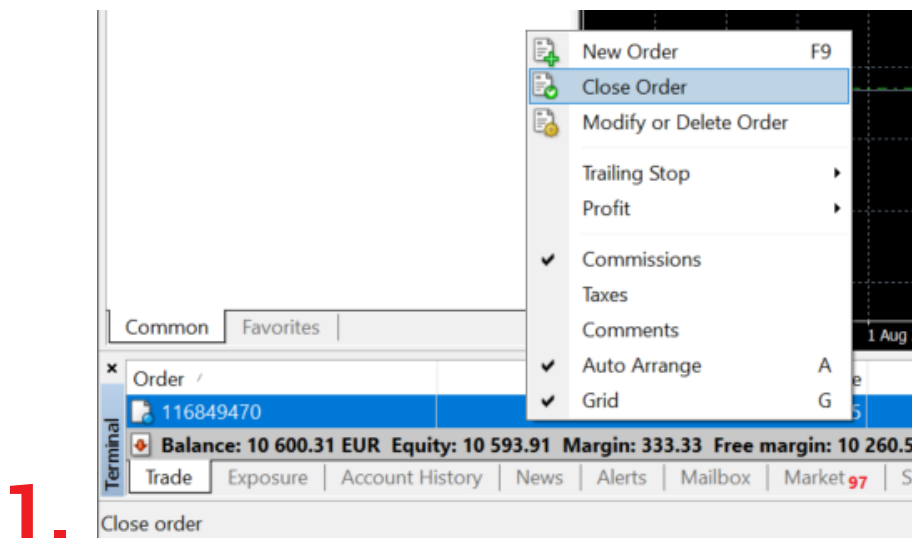
Sell by Market Buy by Market

Close #116852660 buy 0.05 EURUSD by Market

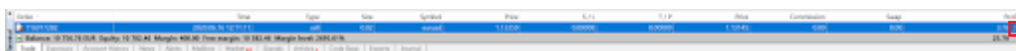
Attention! The trade will be executed at market conditions, difference with requested price may be significant!

Close Order

- Right-click on the desired order and then click on the 'Close Order' option (1.)
- Or, double-click on the desired order and the pop-up window will appear where you can then click on the yellow Close button (2.)

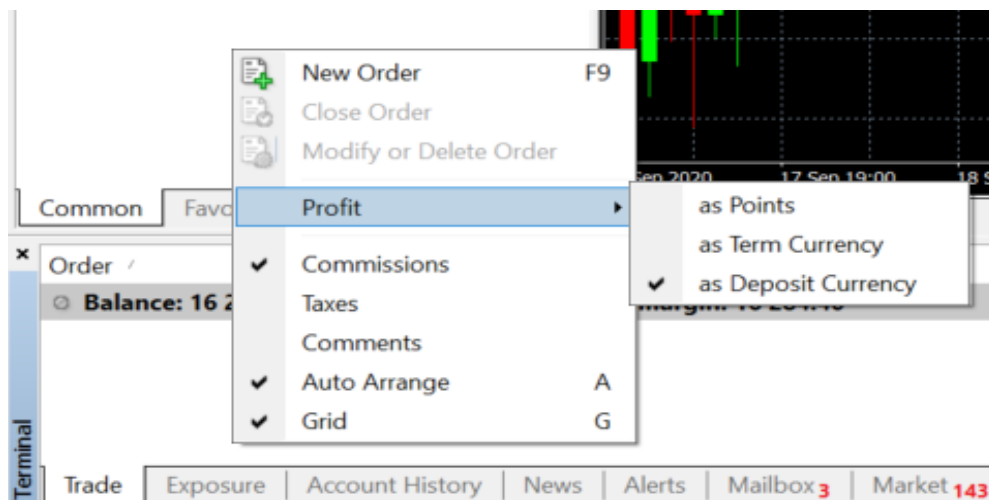


- Or, simply click on the cross in the Trade Tab in the Terminal window



Profit

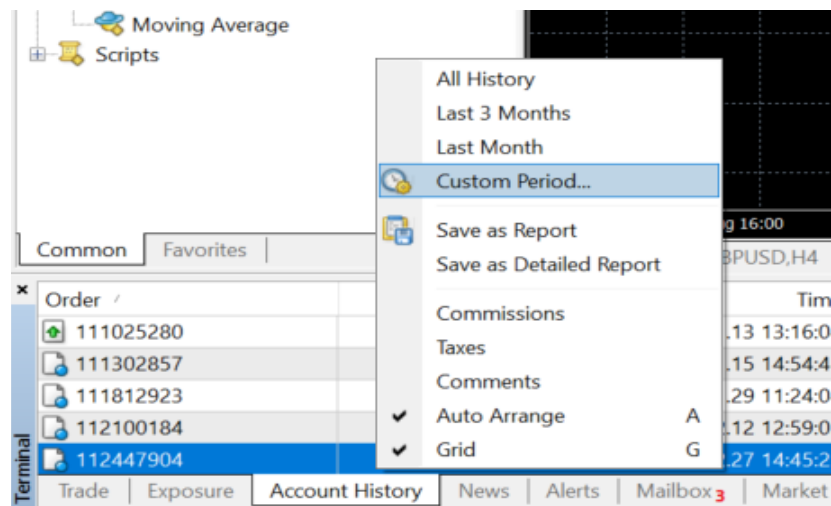
By default the profit is shown in the Deposit Currency, but it can also be changed to Points or Term Currency (Quote) on the 'Terminal' > 'Trade' > right-click 'Profit'



Account History

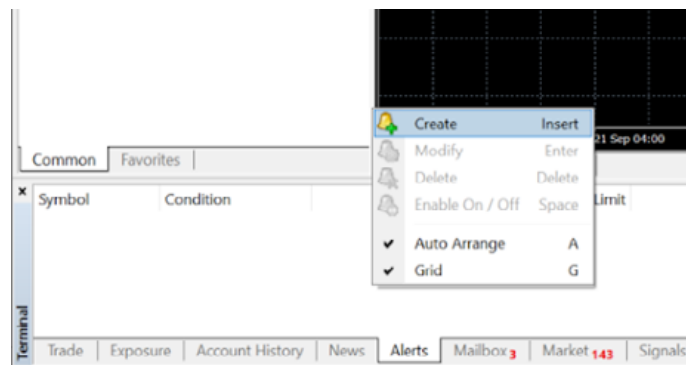
To view the MT4 trading history, log in to MT4 and go to the 'Terminal' > 'Account History' tab at the bottom.

- Right-click within to choose the time period and save the Report or Detailed Report in your computer



Alerts

- To create a price Alert you need to go to 'Terminal' > 'Alerts' > right-click and select 'Create'
- A new pop-up window will open where you can fill in the details such as Action (sound, email, etc.), Expiration date, Symbol, Value, etc. and you can Test it and click OK to set it.



Alert Editor ? X

To add a new or modify the existing alert please define all conditions and select the necessary action.

Enable

Action: Sound

Expiration: 2020.09.28 15:08

Symbol: AUDCAD

Condition: Bid < Value: 0.0000

Source: alert

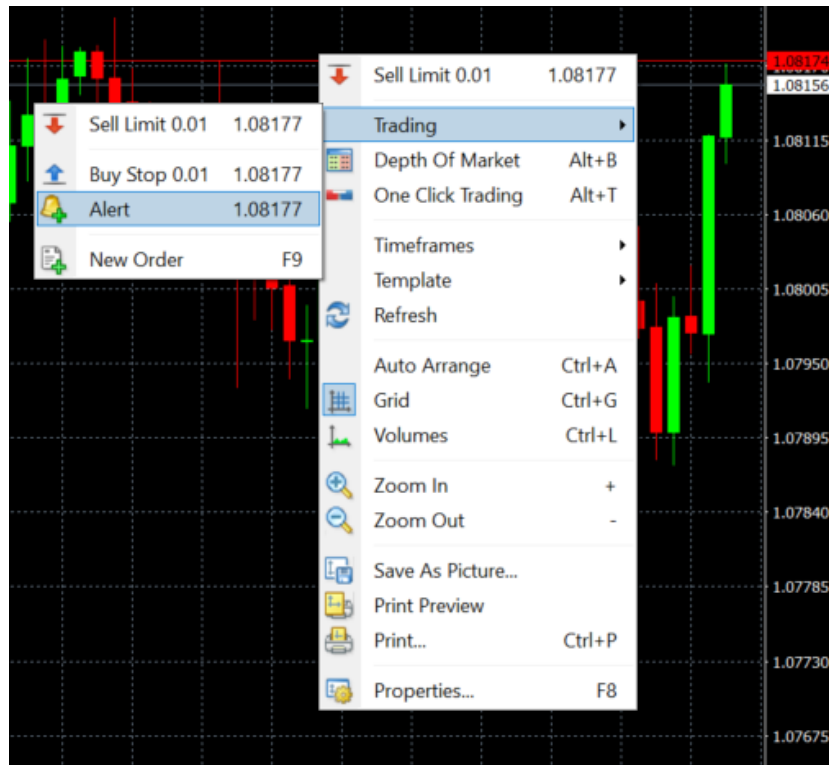
Timeout: 10 sec

Maximum iterations: 1000

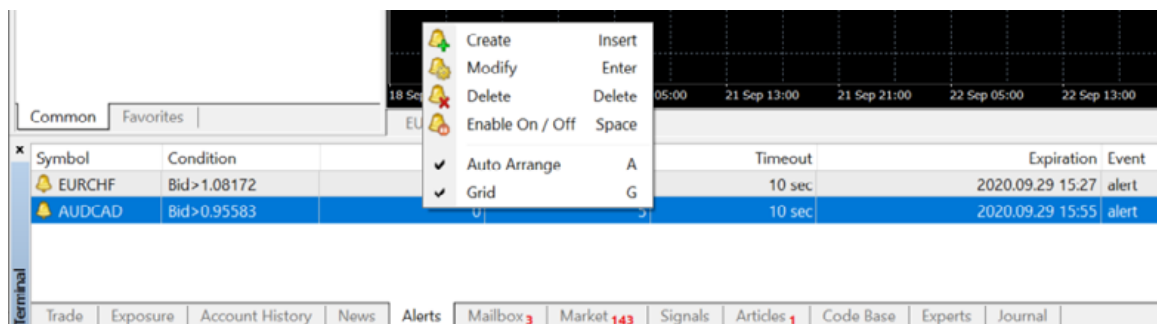
OK Test Cancel

Alerts

- Or, select the price on the chart, right-click > 'Trading' > 'Alert'



- Once the Alerts are set, you can manage them on 'Alerts' Tab on the Terminal window:

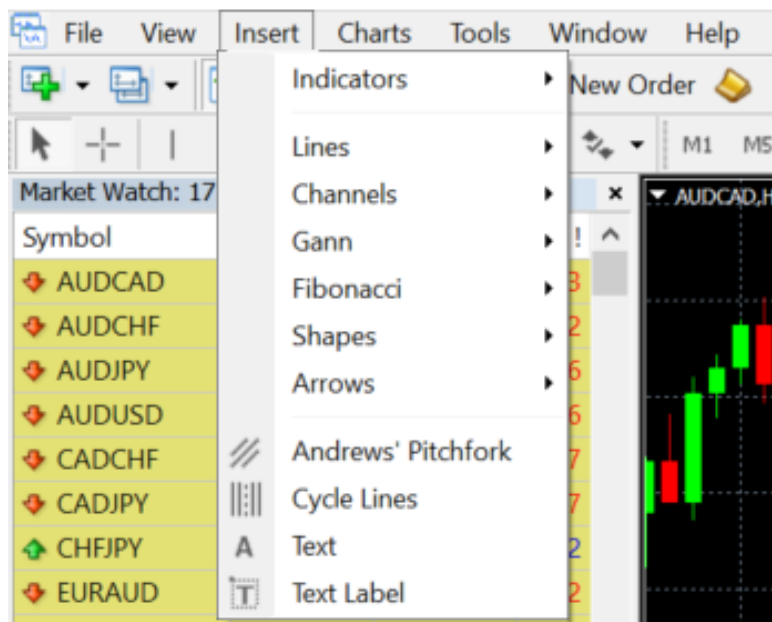


Drawing Tools

- You can access the MT4 drawing tools (i.e. Lines for support and resistance, crosshair, etc.) by clicking on the buttons on the Line Studies toolbar:



- Or, by going to 'Insert' on the menu and choosing the desired object from the list:




- Right-click on the chart window to open the **Objects List** window or press 'Ctrl + B' and manage your chart objects (edit line thickness, delete etc.)

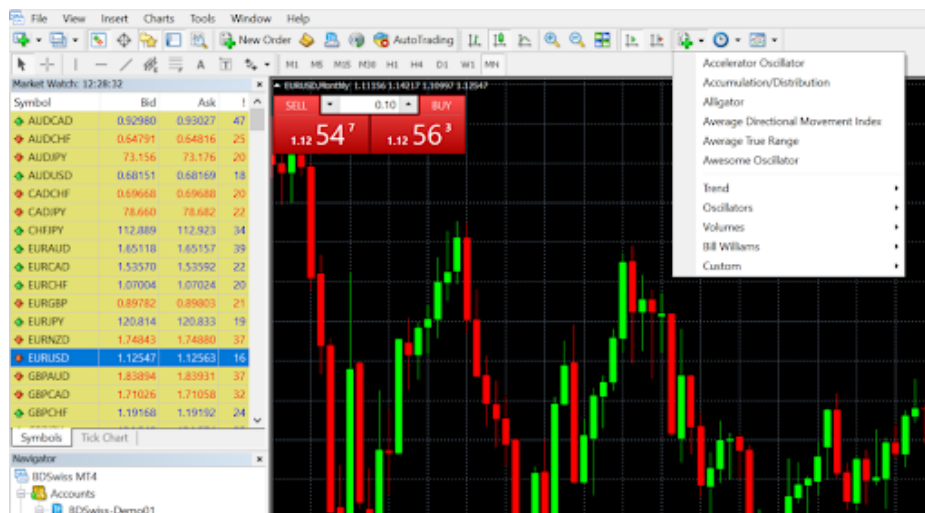
Technical Indicators

To **Add** Technical Indicators on a chart:

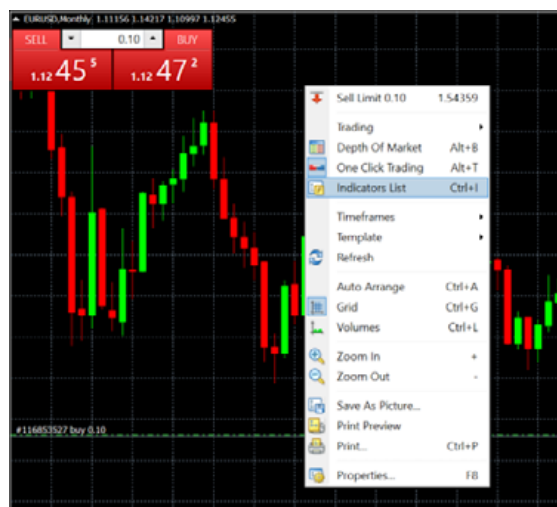
3. You can also drag and drop Indicators from the Navigator window

- Click on the 'Indicators' button  on the toolbar and select the desired Indicator (1.)
- Or, right click on the Chart window and a new pop-up window will open, then select **Indicator List** and add the desired Indicator (2.)

1.



2.



Note: Once you click on the desired Indicator a new pop-up window will open where you can change the parameters to your preferred ones

Technical Indicators

You can **Download** Technical Indicators that are not available by default on the MT4.


- You can download them directly on the MT4 platform on the '**Market**' section on the Terminal window and then you will see them on the Navigator window under the '**Indicators**' > '**Market**'
- Or, you can download the Indicators from other sources:
 1. Download the files (.ex4 and .mq4 formats)
 2. Add them on the MT4 by going to '**File**' > '**Open Data Folder**' > '**MQL4**' > paste or drag the Indicator to the '**Indicators**' Folder
 3. Close and restart the MT4
 4. You will then be able to see the new Indicators on the Navigator window under the '**Indicators**' directory and on the '**Indicators List**' > '**Custom**'

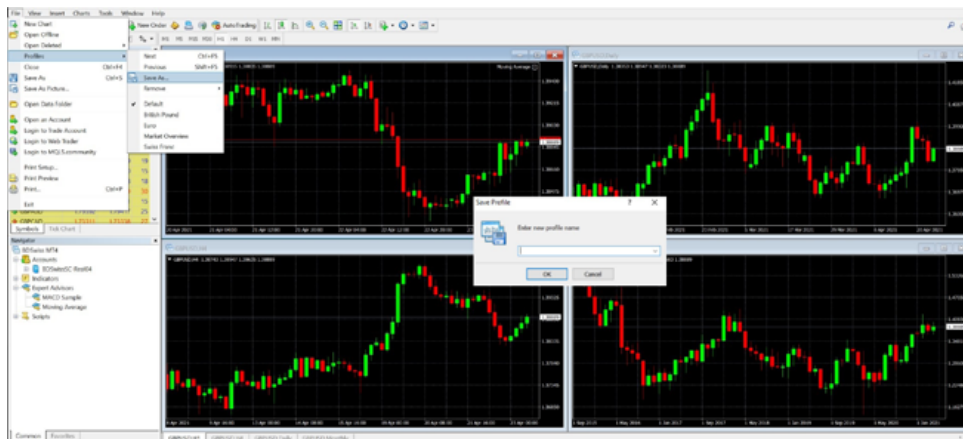
To **Delete** Technical Indicators:



- Right-click on the desired Indicator on the Chart window and a pop-up window will open, and then select Delete Indicator (1.)
-
- Right-click on the Indicator window (technical indicators like Oscillators for e.g. are opened in a separate window) and a new pop-up window will open, then select **Delete Indicator Window** (2.)

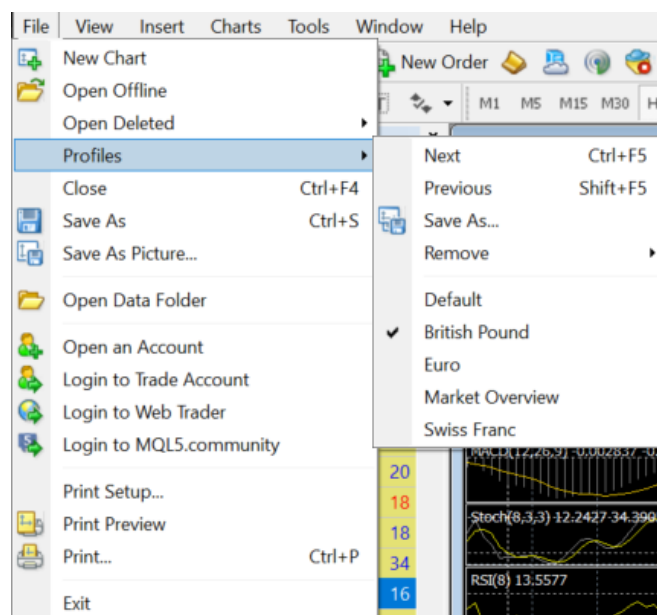


Profiles

- You can create **Profiles** of assets you would like to trade by setting up a group of charts of your preferred assets (with different timeframes, indicators, etc.) and then click on **'File' > 'Profiles' > 'Save as' > 'Enter new profile name' > OK** or by clicking the button  on the standard toolbar.




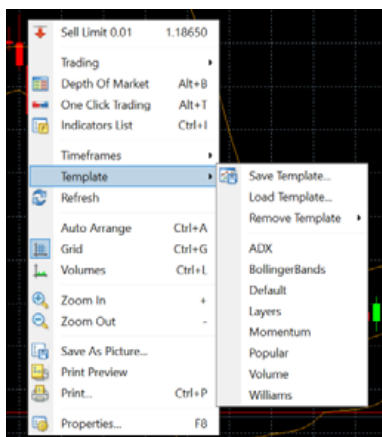
- To Load the new profile, you can go back to **'File' > 'Profiles'** or click on the **'Profiles'** button  and then click on the name of the desired profile
- To **Delete** a profile you need to go to **'File' > 'Profiles' > 'Remove'** or click on the **'Profiles'** button  > **'Remove'** and then click on the profile you want to delete



Templates


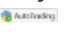
You can create **Templates** that allow you to overlay predefined indicators and other adjustments (ask line, different candle colors, etc.), to a chart. Creating a template allows you to load these predefined settings instead of having to set it up again each time you open a new chart.

1. Open a new chart > Apply all the indicators and settings you wish to use on that chart
2. Right-click on the chart window or click on the **'Templates'** button  on the chart toolbar



- A drop down menu will appear, click on **'Template'** > **'Save Template'** > **'Name the Template'** > Save
- If you want the template to be the **default one for every new chart** you will need to name the template as **Default**

*

- To **Load** a template you need to right-click on the chart window or click on the **'Templates'** button  on the chart toolbar and click on the name of the desired template on the list or click on **'Load Template'** to choose from the templates folder
- To **Delete** a template you need to right-click on the chart window or click on the **'Templates'** button  on the chart toolbar > **'Remove'**

Expert Advisor

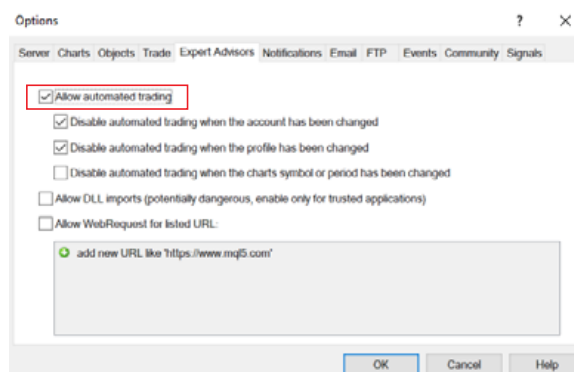
Expert Advisors (EAs) are programs that you install onto the MT4 that will automatically follow instructions once a certain criterion has been met, so basically they are used for automated trading.

To **add** an EA, you need to:

1. Add it on the MT4 by going to **'File' > 'Open Data Folder' > 'MQL4' > paste or drag the EA to the 'Experts' Folder**
2. Restart the MT4 and you will be able to see it on the Navigator under **'Expert Advisors'**

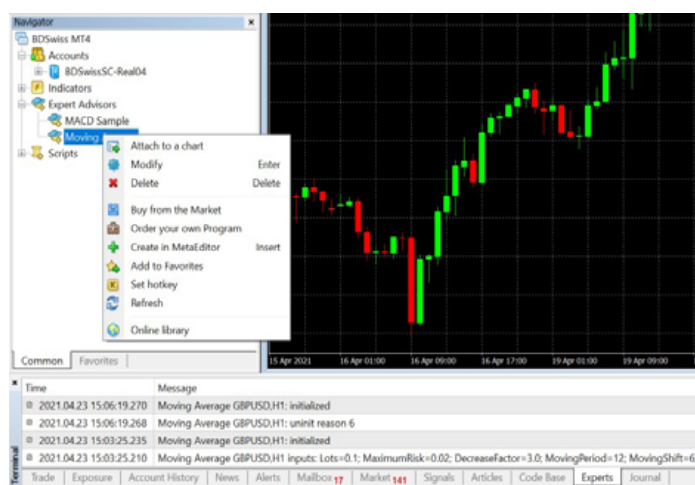
To enable an EA, you need to:

1. Go to **'Tools' on the menu > 'Options' or press 'Ctrl + O' > 'Expert Advisors' > 'Allow Automated Trading'**
2. Enable **Auto Trading** on the standard toolbar:

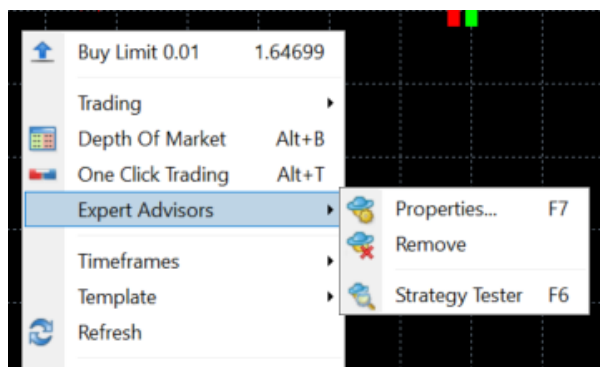


Expert Advisor

3. You will then be able to drag and drop the EA to the chart and manage the EA from the Navigator window > 'Expert Advisors'.
4. Confirm all the EA settings and then, once it's enabled, you will be able to check it on the 'Experts' tab on the Terminal window



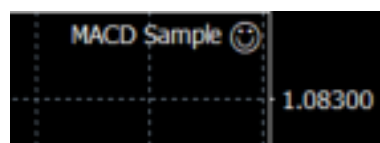
You can also check the EA Properties by pressing **F7** or right-clicking on the chart window > 'Expert Advisors', where you can also remove it:



Note: You will also be able to check if the EA is enabled or not by the symbol on the right-top corner of the chart window




Disabled



Enabled

Strategy Tester

The **Strategy Tester** allows you to test and optimize Indicators and Expert Advisors before using them.

- To enable the Strategy Tester click on the button  on the standard toolbar or press **'Ctrl + R'**
- Or, on the chart window with the EA, right-click > **'Expert Advisors'** > **'Strategy Tester'** or press **F6**

The Tester window will open below the Terminal window:



Note: On the Tester window you can select EA or Indicators

Shortcuts

- New Order **F9**
- One Click Trading **Alt +**
- Market Watch **Ctrl + M**
- Show / Hide Symbol **Ctrl + U**
- Navigator **Ctrl + N**
- Terminal **Ctrl + T**
- Bar Chart **Alt + 1**
- Candlestick Chart **Alt + 2**
- Line Chart **Alt + 3**
- Zoom In / Out **+ / -**
- Full Screen **F11**
- Next Chart Window **Ctrl + F6**
- Tile Windows **Alt + R**
- Close Chart Window **Ctrl + W or Ctrl + F4**
- Show / Hide Grid **Ctrl + G**
- Show / Hide Volumes **Ctrl + L**
- Show / Hide OHLC line (top left) **Ctrl + H**
- Crosshair **Ctrl + F**
- Object List **Ctrl + B**
- Indicator List **Ctrl + I**
- Options **Ctrl + O**
- Properties **F8**
- Enable / Disable EA **Ctrl + E**
- Strategy Tester **Ctrl + R or F6**

Risk Warning: Trading in Forex/ CFDs and Other Derivatives is highly speculative and carries a high level of risk. It is possible to lose all your capital. These products may not be suitable for everyone and you should ensure that you understand the risks involved. Seek independent advice if necessary. Speculate only with funds that you can afford to lose.

Domain usage rights belong to BDS Ltd. BDS Ltd (Registration No. 8424660-1) is authorized and regulated by the Financial Services Authority (the "FSA", licence no. SD047) Registered address: Suite 3, Global Village, Jivan's Complex, Mont Fleuri, Mahe, Seychelles.

